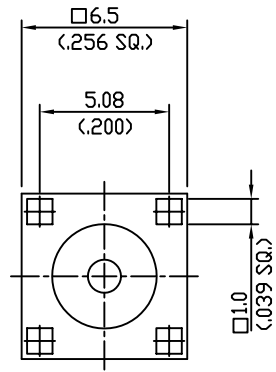
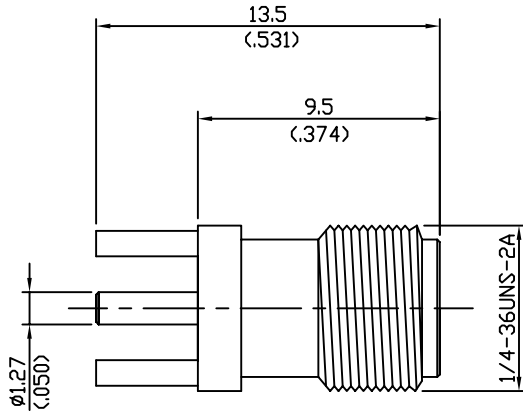


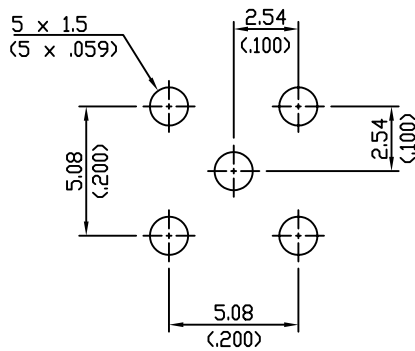
| REVISIONS |             |          |      |
|-----------|-------------|----------|------|
| NO        | DESCRIPTION | APPROVED | DATE |
|           |             |          |      |




Impedance.....50Ω  
 Frequency range.....DC ~ 18GHz  
 V.S.W.R.....N/A  
 Dielectric withstanding  
 - Voltage(at sea level).....1000Vrms.50Hz  
 - Working voltage(at sea level).....≤325Vrms.50Hz  
 Insulation resistance.....≥5.10<sup>3</sup> MΩ  
 Center contact resistance.....≤3MΩ  
 Out contact resistance.....≥2MΩ  
 Temperature range.....-65°C ~ +165°C  
 Temperature shock.....MIL-STD202,Method107,ConditionB  
 Moisture resistance.....MIL-STD202,Method106  
 Corrosion.....Saltspray Test acc.to MIL-STD-202, Method101,ConditionB  
 Vibration.....MIL-STD202,Method204,ConditionD  
 Shock.....MIL-STD202,Method203,ConditionI  
 Contact captivation.....≥27N/6.1lbs.  
 Durability(Matings).....≥500

| Connector parts | Material         | Plating |
|-----------------|------------------|---------|
| Bodys           | Brass            | Gold    |
| Center contact  | Beryllium-copper | Gold    |
| Insulator       | PTFE             | White   |

Mounting hole



TOL.UNLESS NOTED  
 X = ±0.1  
 X.X = ±0.05  
 X.XX = ±0.01

|             |         |  |
|-------------|---------|--|
| DATE        |         |  <a href="http://www.rfacsolutions.com">www.rfacsolutions.com</a> |
| DRAWN BY    |         |  |
| DESIGNED BY |         | TITLE<br>SMA STRAIGHT<br>PCB JACK  |
| CHECKED BY  |         | DRAWING NO<br>R330-074-000   |
| APPD.BY     |         | SHEET 1 OF 1   |
| SCALE 1 : 1 | UNIT mm |  |