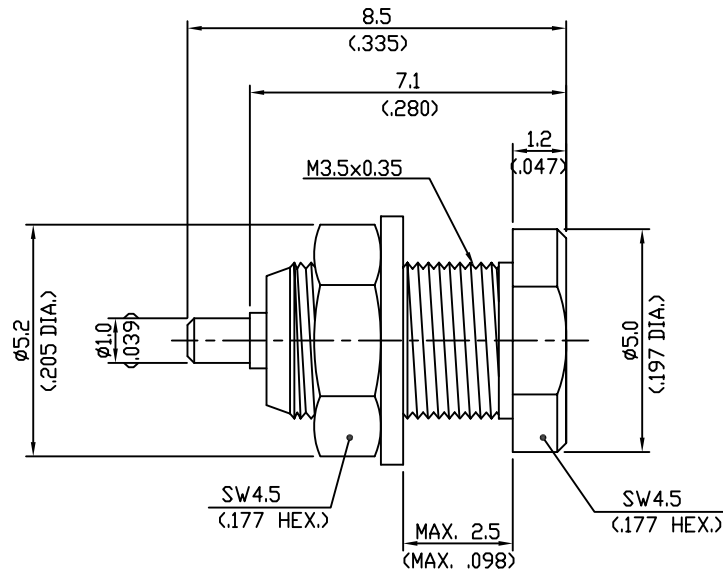


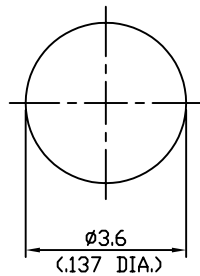
REVISIONS			
NO	DESCRIPTION	APPROVED	DATE




Impedance.....50 Ω
 Frequency range.....DC ~ 6GHz
 V.S.W.R.....N/A
 Dielectric withstanding
 - Voltage(at sea level).....500Vrms.50Hz
 - Working voltage(at sea level)..... ≤ 170 Vrms.50Hz
 Insulation resistance..... $\geq 10^3$ M Ω
 Center contact resistance..... ≤ 5.0 M Ω
 Out contact resistance..... ≥ 2.5 M Ω
 Temperature range.....-55 $^{\circ}$ C ~ +155 $^{\circ}$ C
 Temperature shock.....MIL-STD202,Method107,ConditionF
 Moisture resistance.....MIL-STD202,Method106
 Corrosion.....Saltspray Test acc.to MIL-STD-202, Method101,ConditionB
 Vibration.....MIL-STD202,Method204,ConditionC
 Engagementforce..... ≤ 15 N/3.4lbs.
 Disengagementforce.....6N-15N/1.4lbs.-3.4lbs.
 Contact captivation..... ≥ 10 N/2.3lbs.
 Durability(Matings)..... ≥ 500

Connector parts	Material	Plating
Bodys	Brass	Gold
Center contact	Beryllium-copper	Gold
Insulator	PTFE	White

Mounting hole



TOL.UNLESS NOTED
 X = ± 0.1
 X.X = ± 0.05
 X.XX = ± 0.01

DATE		 www.rfacsolutions.com
DRAWN BY		
DESIGNED BY		TITLE
CHECKED BY		MMCX BULKHEAD JACK
APPD.BY		DRAWING NO
SCALE 1 : 1	UNIT mm	R310-019-000
		SHEET 1 OF 1