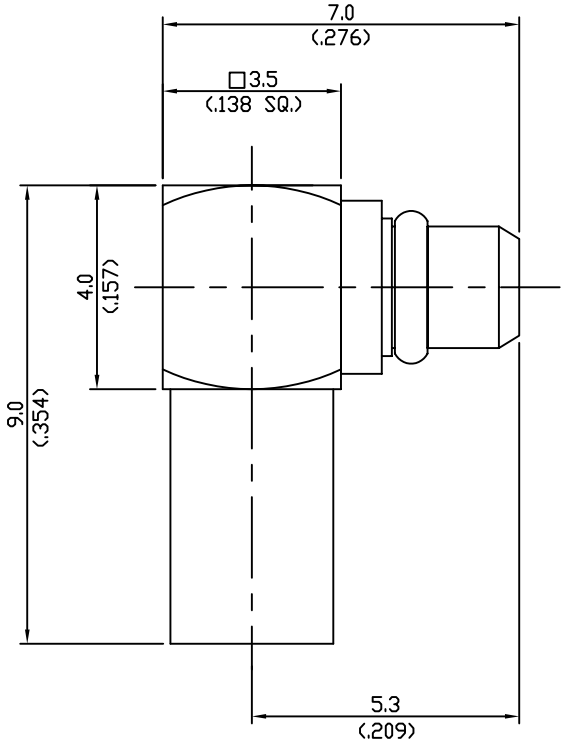


REVISIONS			
NO	DESCRIPTION	APPROVED	DATE



Impedance.....50Ω  
 Frequency range.....DC ~ 6GHz  
 V.S.W.R.....N/A  
 Dielectric withstanding  
   - Voltage(at sea level).....500Vrms.50Hz  
   - Working voltage(at sea level).....≤170Vrms.50Hz  
 Insulation resistance.....≥10<sup>3</sup> MΩ  
 Center contact resistance.....≤5.0MΩ  
 Out contact resistance.....≥2.5MΩ  
 Temperature range.....-55℃ ~ +155℃  
 Temperature shock.....MIL-STD202,Method107,ConditionF  
 Moisture resistance.....MIL-STD202,Method106  
 Corrosion.....Saltspray Test acc.to MIL-STD-202, Method101,ConditionB  
 Vibration.....MIL-STD202,Method204,ConditionC  
 Engagementforce.....≤15N/3.4lbs.  
 Diengagementforce.....6N-15N/1.4lbs.-3.4lbs.  
 Contact captivation.....≥10N/2.3lbs.  
 Durability(Matings).....≥500

Connector parts	Material	Plating
Bodys	Brass	Gold
Center contact	Beryllium-copper	Gold
Insulator	PTFE	White

TOL.UNLESS NOTED  
 X = ±0.1  
 X.X = ±0.05  
 X.XX = ±0.01

DATE	
DRAWN BY	
DESIGNED BY	
CHECKED BY	
APPD.BY	
SCALE 1 : 1	UNIT mm


**RFAC Solutions**
[www.rfacsolutions.com](http://www.rfacsolutions.com)

TITLE **MMCX RIGHT ANGLE PLUG**  
 .085"(RG-405, M17/133)

DRAWING NO **R310-004-000**

SHEET 1 OF 1